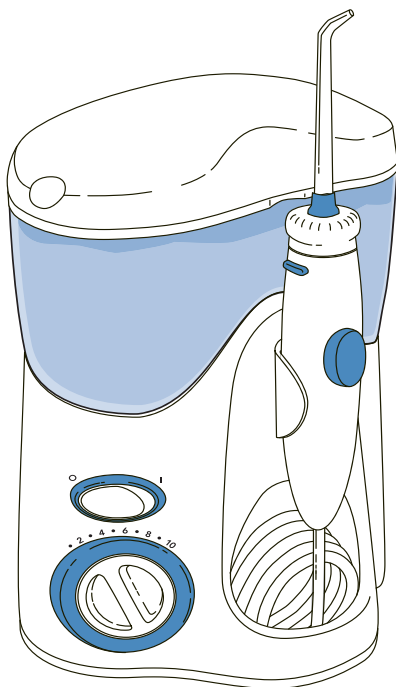


Waterpik® Water Flosser Model WP-100



Congratulations! By selecting the Waterpik® Water Flosser you are now on your way to better gum health, and a healthier smile!

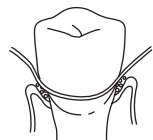
With a clinically proven combination of water pressure and pulsations, the Waterpik® Water Flosser removes harmful bacteria deep between teeth and below the gumline – where brushing alone won't reach.

Thank you for choosing the Waterpik® Water Flosser.

Traditional Oral Care

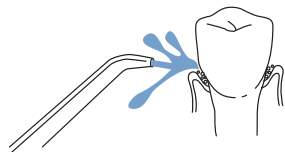


Traditional brushing can't easily reach hidden food debris and harmful bacteria.



Flossing has limited access below the gumline.

Oral Care With The Waterpik® Water Flosser



The Waterpik® Water Flosser removes trapped food debris and harmful bacteria.

Important Safeguards	4
Product Description	6
Getting Started	8
Care of Your Waterpik® Water Flosser	13
Troubleshooting Guide	14
Limited Two-Year Warranty	15

IMPORTANT SAFEGUARDS

When using electrical products, especially when children are present, the basic safety precautions below should always be followed.

READ ALL INSTRUCTIONS BEFORE USING.

DANGER:

To reduce the risk of electrocution:

- Always unplug product after using.
- Do not handle plug with wet hands.
- Do not immerse in water or other liquid.
- Do not use while bathing.
- Do not place or store product where it can fall or be pulled into a tub, shower stall or sink.
- Do not reach for a product that has fallen into any liquid. Unplug immediately.
- Check the power supply cord for damage before the first use and during the life of the product.

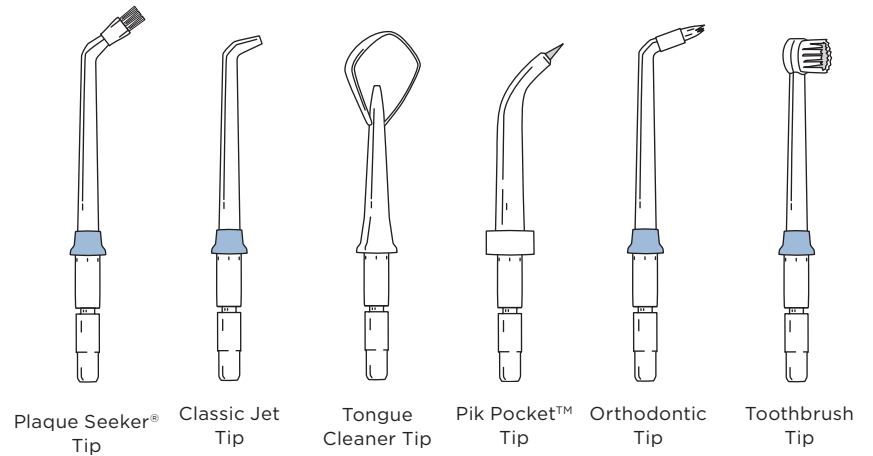
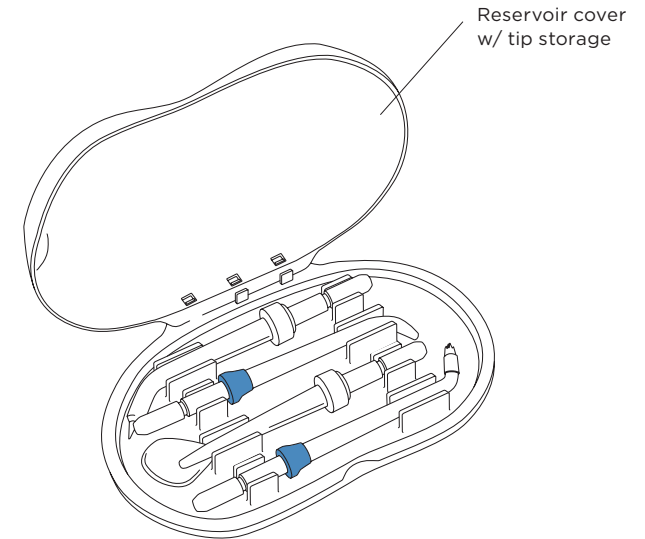
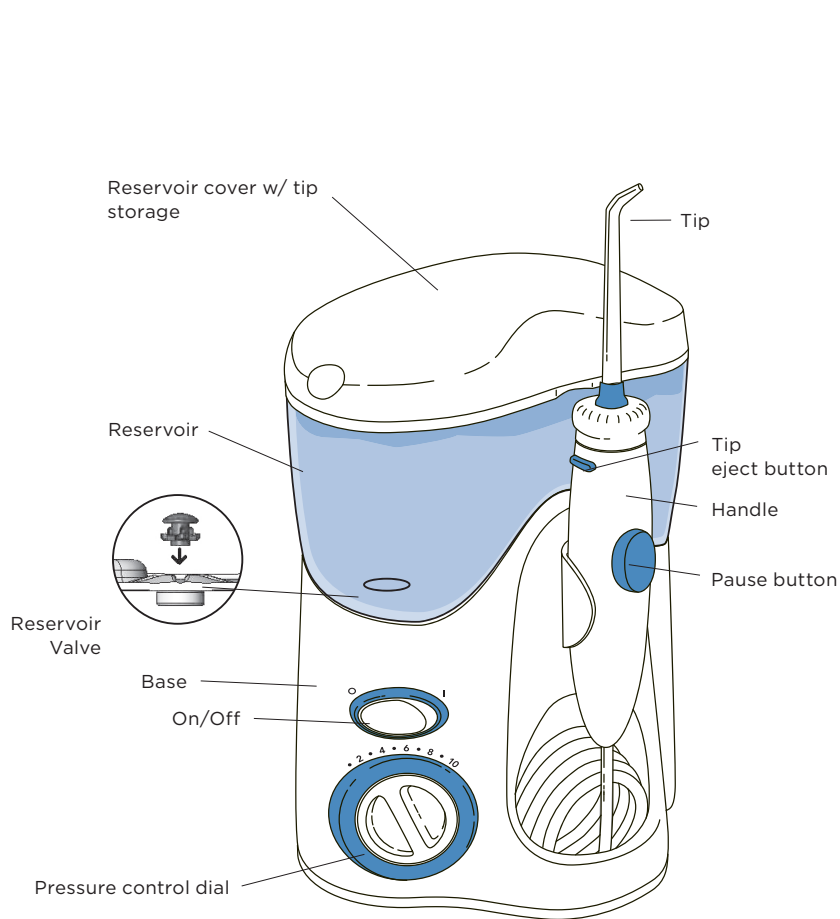
WARNING:

To reduce the risk of burns, electric shock, fire, serious injury or damage to tissue:

- Do not plug this device into a voltage system that is different from the voltage system specified on the device or charger.
- Do not use this product if it has a damaged cord or plug, if it is not working properly, if it has been dropped or damaged, or dropped into any liquid. Contact Water Pik, Inc. or your local distributor which can be found at www.waterpik.com/intl.
- Do not direct water under the tongue, into the ear, nose or other delicate areas. This product is capable of producing pressures that may cause serious damage in these areas. See operating instructions for correct usage.
- Use this product only as indicated in these instructions or as recommended by your dental professional.
- Only use tips and accessories recommended by Water Pik, Inc.
- Do not drop or insert any foreign object into any opening or hose.
- Keep electrical cord away from heated surfaces.

- Do not operate where oxygen or aerosol sprays are being used.
- Fill reservoir with water or other dental professional recommended solution only.
- Do not use iodine, bleach, or water insoluble concentrated essential oils in this product. Use of these can reduce product performance and will shorten the life of the product.
- Do not use while wearing any oral jewelry. Remove prior to use.
- Do not use if you have an open wound on your tongue or in your mouth.
- If your physician or cardiologist has advised you to receive antibiotic premedication before dental procedures, you should consult your dentist and/or medical professional before using the Water Flosser or any other oral hygiene aid.
- For household use only. Do not use outdoors.
- Closely instruct and supervise children and individuals with special needs in the proper use of this product.
- Do not remove the Pik Pocket™ flexible tip from the clear shaft. If it separates for any reason, discard both the tip and shaft and replace with a new Pik Pocket™ Tip. Pik Pocket™ Tip not included in all models.
- Do not use this product for more than 5 minutes in each two-hour period. Longer usage can overheat the motor and cause product failure as well as voiding the warranty.
- Children should be supervised to ensure that they do not play with the appliance.

SAVE THESE INSTRUCTIONS

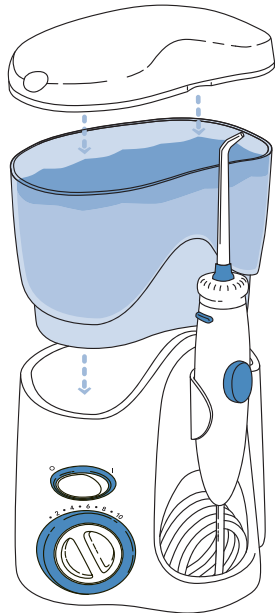


NOTE: all tips not included in all models

Plug the cord into an electrical outlet. If the outlet is controlled by a wall switch, be sure it is turned on.

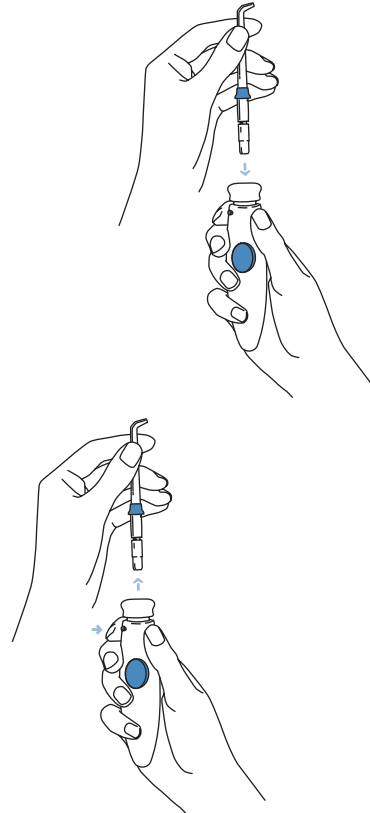
Preparing the Reservoir

Remove reservoir and cover from base. Fill the reservoir with lukewarm water. Replace the reservoir over the base and press down firmly.



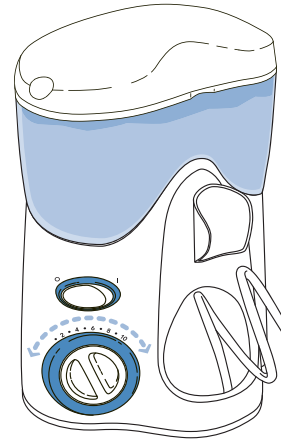
Inserting and Removing Tips

Insert tip into the center of the knob at the top of the Water Flosser handle. The colored ring will be flush with the end of the knob if the tip is correctly locked into place. To remove tip from the handle, press the tip eject button and pull tip from handle.



Adjusting the Pressure Setting

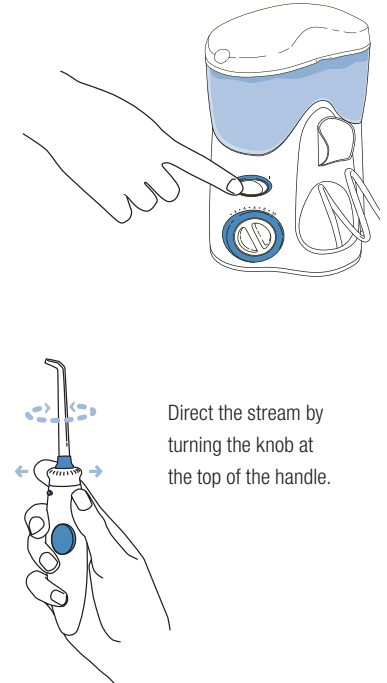
Turn the pressure control dial on the base of the unit to the lowest setting (pressure setting No. 1) for first-time use. Gradually increase pressure over time to the setting you prefer – or as instructed by your dental professional.



Placement in Mouth

Lean low over sink and place the tip in mouth. Aim the tip toward teeth.

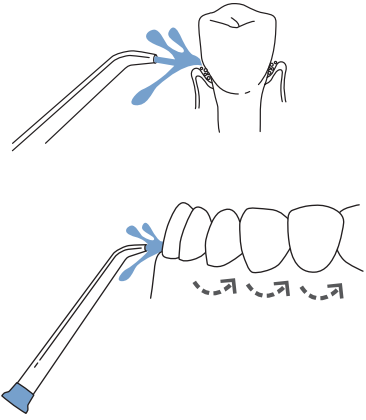
With your free hand, turn the unit on. Set pressure at desired setting.



Direct the stream by turning the knob at the top of the handle.

Recommended Technique

Direct the stream at a 90-degree angle to your gumline. **Slightly close lips to avoid splashing** but allow water to flow freely from mouth into the sink. For best results, start in the molar area (back teeth) working toward the front teeth. Glide tip along gumline and pause briefly between teeth. Continue process until you have cleaned the inside and outside of both the upper and lower teeth.

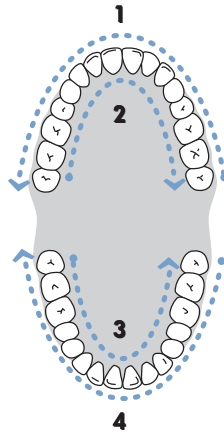
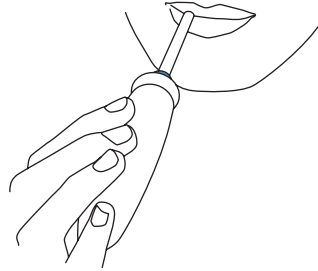
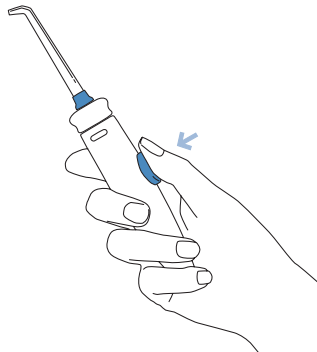


Pause Control

You can temporarily stop the flow any time by pressing the pause button on the handle.

When Finished

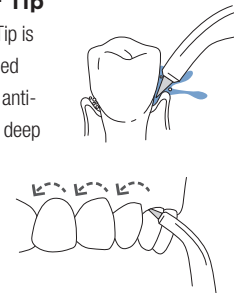
Turn the unit off. Empty any liquid left in the reservoir. Unplug the unit.



TIP USAGE

Pik Pocket™ Tip

The Pik Pocket™ Tip is specifically designed to deliver water or anti-bacterial solutions deep into periodontal pockets. It is not intended for general use.

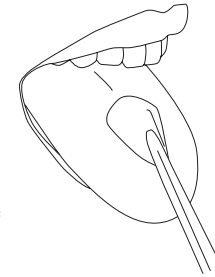


To use the Pik Pocket™ Tip, set the unit to the lowest pressure setting. Lean low over your sink and place the soft tip against a tooth at a 45-degree angle and gently place the tip under the gum line, into the pocket. Turn the unit on and continue tracing along the gum line until all periodontal pockets are treated.

NOTE: This tip must be used only with the Pressure Control set to 1. Use on a higher setting will shorten life of tip and power handle

Tongue Cleaner Tip

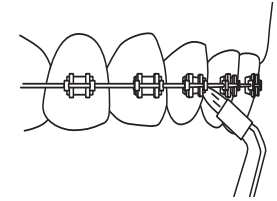
Place the tongue cleaner on your tongue and start the Water Flosser – use the lowest pressure setting, increase as comfortable. Gently place the tongue cleaner in the center/midline of your tongue about half way back and with light pressure pull forward.



Orthodontic Tip

The special Orthodontic Tip is uniquely designed to simultaneously brush and rinse hard-to-reach areas around braces and other dental work.

Start on the last molar (back tooth). Aim tip at 90 degree angle to the tooth at the gumline. Gently glide tip along gumline, pausing briefly to lightly brush area between teeth and all around orthodontic bracket, before proceeding to the next tooth. Continue process until you have cleaned the inside and outside of both the upper and lower teeth.



Toothbrush Tip

Place the toothbrush tip in mouth with the brush head on the tooth at the gum line. The toothbrush tip can be used with or without toothpaste. Turn the Water Flosser on so water flows through the tip. Using a light pressure (bristles should not bend) massage the brush back and forth with very short strokes – much like you would with a manual toothbrush. Repeat on adjacent teeth. Water will flow through the brush, to help simultaneously clean and rinse the tooth surface.



Plaque Seeker® Tip

Direct the jet stream at a 90-degree angle to your gumline. Close lips slightly to avoid splashing but allow water to flow freely from mouth into sink. Start in the molar (back teeth) area working toward the front teeth. Place the tip close to the teeth so that the bristles are gently touching the teeth.

Gently glide tip along gumline, pausing briefly between teeth to gently brush and allow the water to flow between the teeth. Continue until all areas around and between the teeth both inside and outside, top and bottom have been cleaned.



Using Mouthwash and

Other Solutions

Your Waterpik® Water Flosser can be used to deliver mouthwash and antibacterial solutions. Ask your dental professional to recommend the appropriate solution for you. Note: use of some antibacterial solutions could shorten the life of your Waterpik® Water Flosser.

After using any special solution in the reservoir, take a moment after every use to rinse the unit. Partially fill the reservoir with warm tap water. Aim the jet tip into your sink. Turn on the unit and let it run until empty. This will help keep the tip from clogging and help your unit to last longer.

Clean the product when necessary by using a soft cloth and mild non-abrasive cleanser.

Before cleaning, unplug from the electrical outlet.

Before exposing the Water Flosser to freezing temperatures, remove the reservoir and run the unit until completely empty.

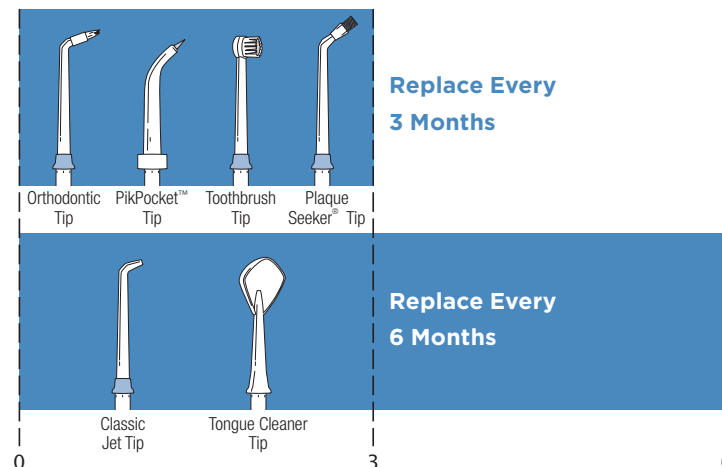
Service Maintenance

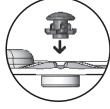
Waterpik® Water Flossers have no consumer-serviceable electrical items and do not require routine service maintenance. For all your service needs, go to www.waterpik.com/intl to find your local distributor. Please do not ship product to Waterpik International, Inc. offices, as this will delay service.

Refer to the serial and model numbers in all correspondence. These numbers are located on the bottom of your unit.

Distributed By:
Brandfarm Pty Ltd
Lvl 5 Nexus Building
4 Columbia Crt
Norwest Business Park
Norwest NSW 2153
+61 2 8860 6463

RECOMMENDED TIP REPLACEMENT INTERVALS



PROBLEM	CAUSE	CORRECTIVE ACTION
Tips and Tongue Cleaner		
Leakage between the tip and handle knob.	1) Tip not fully engaged.	1) Remove tip and reinstall.
Pik Pocket™ Tip		
Tear in soft tip.	1) Tip is worn. 2) Tip is split.	1) Replace with new tip. 2) Use lowest pressure setting only.
Water Flosser Base		
Hose to the handle leaks.	1) Damage to the hose.	1) Visit www.waterpik.com or contact your local Water Pik, Inc. distributor which can be found at www.waterpik.com/intl .
Reservoir leaks.	1) Missing black reservoir valve.	1) Replace reservoir valve or ensure valve is right side up (see image to right). 
	2) Reservoir valve is upside down.	2) Turn valve right-side up.
Inadequate pressure.	1) Reservoir not positioned properly.	1) Re-position reservoir. Press down firmly on the reservoir.
	2) Tip is clogged with debris.	2) Flush tip under faucet or replace tip.
	3) Black reservoir valve clogged.	3) Remove reservoir valve and clean by massaging the valve under warm running water and place back into reservoir. Ensure the valve is right-side up (see above image).
Unit doesn't start.	1) Motor not running.	1) Be sure outlet is functioning; test with another appliance (check electrical reset button and/or wall switch).

Still have questions? Go to www.waterpik.com/intl to find your local distributor.

Water Pik, Inc. warrants to the original purchaser/owner of this product that it is free from defects in materials and workmanship for two years from date of purchase. Save your receipt as your proof of purchase date. Water Pik, Inc. reserves the right to request the product to be returned for analysis to confirm the claim falls within our warranty policy. We will replace any part of the product, which in our opinion is defective, provided the product has not been abused, misused, altered or damaged after purchase and was used according to these instructions. This limited warranty excludes accessories or consumable parts such as tips, etc. Water Pik, Inc. will not be responsible for any expenses incurred as a result of any warranty claim accepted by Water Pik, Inc. This warranty gives you specific additional legal rights to those which you may have depending on the law in your place of residence. Our goods come with guarantees that cannot be excluded under the Australian Consumer Law. You are entitled to a replacement or refund for a major failure and for compensation for any other reasonably foreseeable loss or damage. You are also entitled to have the goods repaired or replaced if the goods fail to be of acceptable quality and the failure does not amount to a major failure.

To make a warranty claim and before sending the product, please contact:

Brandfarm Pty Ltd
Lvl 5 Nexus Building
4 Columbia Crt
Norwest Business Park
Norwest NSW 2153
+61 2 8860 6463

This warranty is given by:
Water Pik, Inc.
1730 East Prospect Road
Fort Collins, CO 80553-0001
USA

**Water Pik, Inc.**

1730 East Prospect Road
Fort Collins, CO 80553-0001 USA

Distributed By:

Brandfarm Pty Ltd
Lvl 5 Nexus Building
4 Columbia Crt
Norwest Business Park
Norwest NSW 2153
+61 2 8860 6463
www.waterpik.com.au

www.waterpik.com

Waterpik® is a trademark of Water Pik, Inc. registered in Argentina, Australia, Benelux, Canada, Chile, China, Hong Kong, India, Japan, Korea, Mexico, New Zealand, Norway, Pakistan, Russian Federation, Singapore, South Africa, Switzerland, Taiwan, Ukraine, and the United States.

Waterpik® (stylized) is a trademark of Water Pik, Inc. registered in Australia, Brazil, Canada, China, EU, Hong Kong, Japan, Mexico, Korea, Russian Federation, Switzerland, Trinidad & Tobago, and the United States.

Treat Yourself Better™ and Pik Pocket™ are trademarks of Water Pik, Inc.

Plaque Seeker® is a trademark of Water Pik, Inc. registered in Canada, China, EU, and the United States.

Form No. 20013642-F AB

©2012 Water Pik, Inc.

Designed in USA.

Made in CHINA.



Second Story
MARKETING

Date: 3.19.12

Client: Water Pik, Inc.

Filename: WP 100A IG FN20013642-F AB.indd

Description: Water Pik Instruction Manual

Model WP-100A, Australian

File Type: Adobe InDesign

Prepared by: Michelle C.

Form Number:

Size: 10X7 flat, 5X7 folded

Scale: 100%

Ink: Pantone Process Black, Pantone 646

SS Job No.



Pantone
646



Pantone
Process
Black